

Detroit Speed
Selecta-Speed™ Wiper Kit
 1963-65 Ford Falcon & Mercury Comet
 P/N: 121654

The Detroit Speed Selecta-Speed™ Wiper kit provides you with the performance and convenience of a late model wiper system in a package that easily and cleanly mounts in your 1963-65 Ford Falcon or Mercury Comet. The wiper motor contains a low profile, seven-speed wiper motor with five delays, low speed, and high speed, rotary switch, and wiring harness.



Item #	Description	Quantity
1	Wiper Motor Assembly	1
2	Wiper Control Module	1
3	Wiper Harness	1
4	Wiper Switch	1
5	Wiper Switch Nut	1
6	Wiper Switch Spacer	1
7	Hardware Kit	1
8	Instructions	1

This kit features a seven-speed wiper system with five delays, low speed, and high speed. The new pitman arm, included in the kit, bolts directly to your existing wiper linkage. A rotary switch is also included, along with the complete wiring harness.

This kit does feature a washer pump option as the wiper switch does have a push button function. The wiring harness/control module is equipped with a power and ground wire to install an inline electric washer pump. Detroit Speed does offer a washer pump kit available as part number 121102.

Installation Instructions:

1. Disconnect the battery power by removing the negative battery lead from the battery. Mark the position of the wiper arms by placing masking tape on the windshield. This will assure the arms are accurately replaced. Remove the wiper arms, washer hoses and gauge cluster assembly from the vehicle.
2. Disconnect the wiper linkage from the wiper motor under the dash by removing the retaining clip from the wiper motor pitman arm (Figure 1).



Figure 1 - Retaining Clip

3. Push the wiper linkage off the wiper motor pitman arm stud. Remove the stock wiper motor and mounting bracket located under the dash. The factory mounting bracket is held in place with three screws.
4. The original wiring will not be used with the new Selecta-Speed Wiper Kit. A custom harness is provided to replace the original. **NOTE: If you decide to cut the old wires please pay special attention to properly terminate the wire ends to avoid possible shorting.**
5. Remove the factory wiper motor and the factory star washers/grommets from the factory mounting bracket (Figure 2).

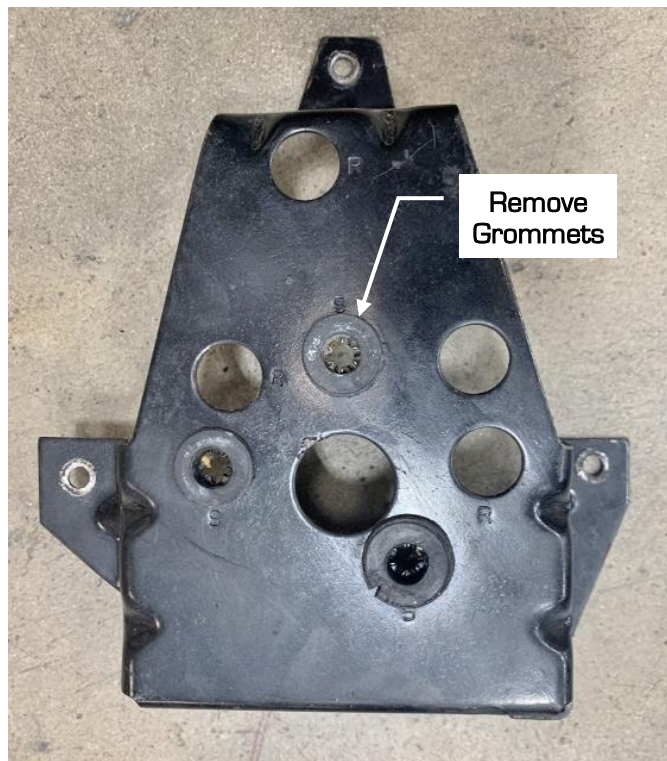


Figure 2 - Factory Wiper Motor Mounting Bracket

- Cut out the perimeter of the wiper motor adapter template in Figure 8 on page 5. Locate the template on the mounting bracket so the large center hole lines up with the center hole in the bracket. Align two of the smaller holes that are close together on the template so they are 90° to the bottom edge of the mounting bracket (Figure 3).



Figure 3 – Wiper Motor Spacer Template

- Use a center punch and locate the center of the three smaller holes to the bracket (Figure 4). Remove the template from the bracket.

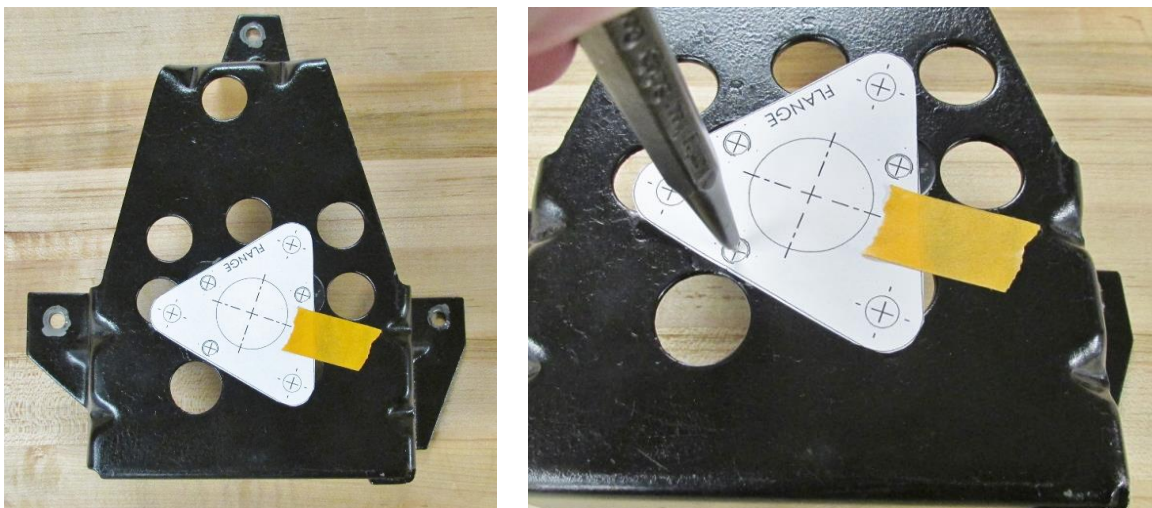


Figure 4 – Transfer Punch Bracket

- Drill three small holes that were transferred from the motor adapter template finishing with a 17/64" drill bit through the mounting bracket (Figure 5 on the next page).

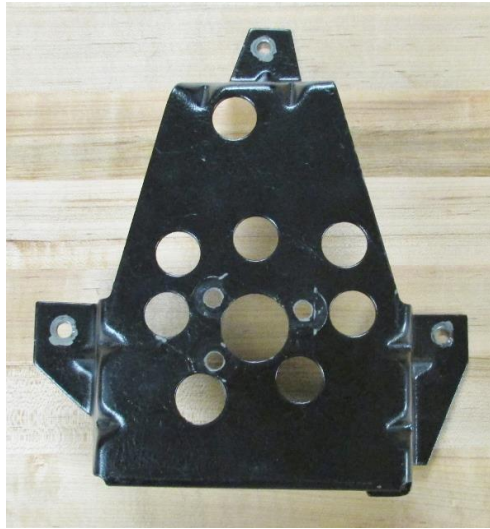


Figure 5 - Drill Motor Mount Holes

9. Mount the new wiper motor assembly to the factory mounting bracket with the wiper motor adapter in between the wiper motor and the mounting bracket. Use the provided 1/4"-28 x 3/8" L button head screws and tighten (Figure 6).

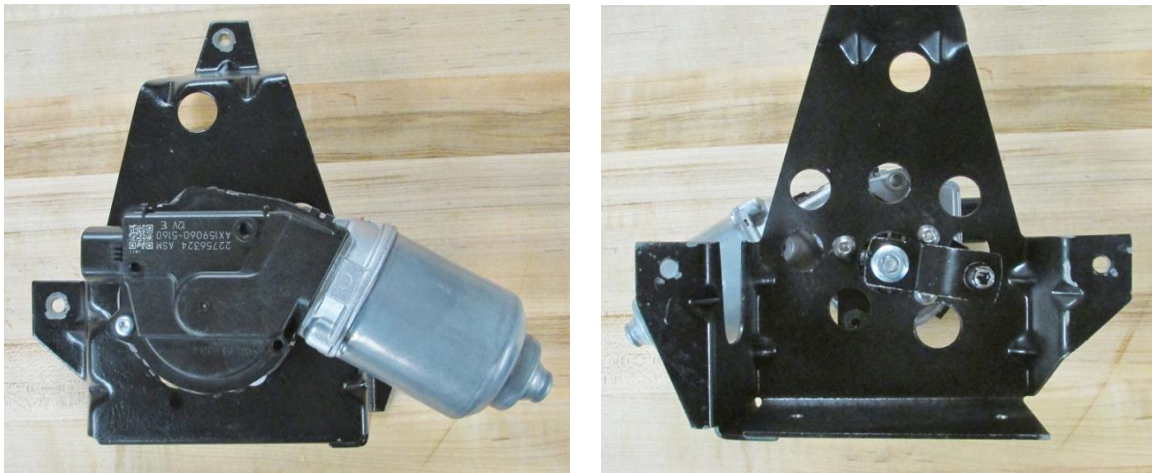


Figure 6 - Wiper Motor

10. Mount the wiper control module to the bottom side of the factory wiper motor mounting bracket. Position the module on the bracket and mark two mounting holes.
11. Drill two holes with a 1/4" drill bit at the locations marked in the previous step. Use the provided 8-32 hardware to mount the module to the bracket (Figure 7). **NOTE:** Make sure the connectors are facing away from the mounting flange of the factory bracket.

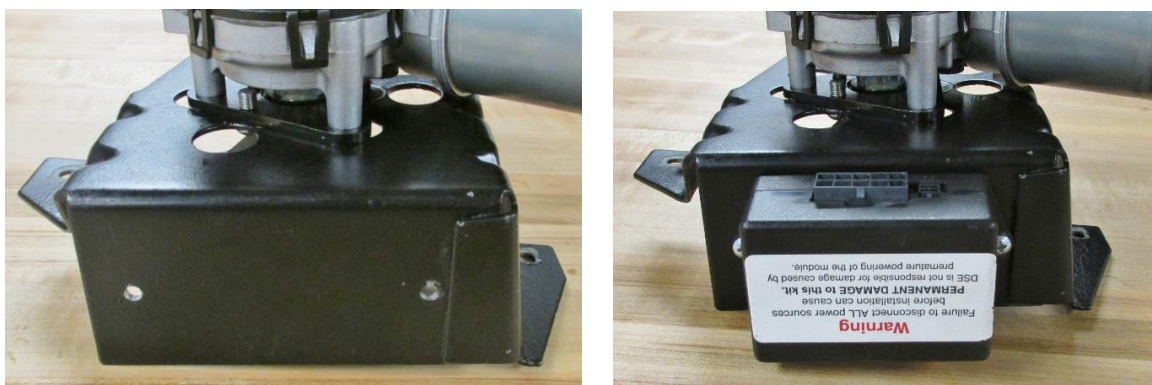


Figure 7 - Mount the Wiper Control Module

Wiper Motor Adapter Template

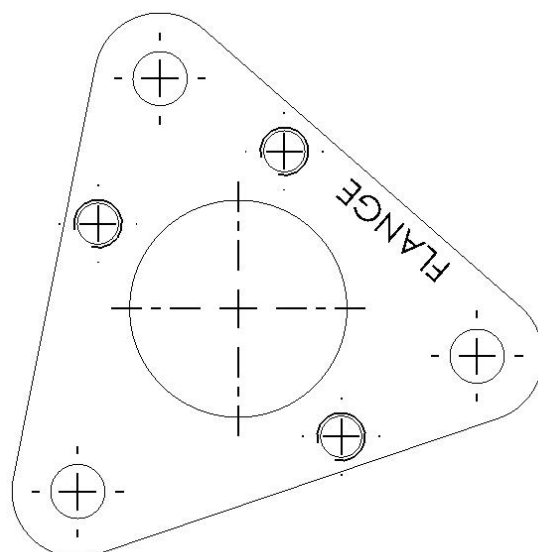


Figure 8 - Cut Out Template

12. Re-install the mounting bracket with the wiper motor and control module back onto the firewall and tighten the three screws.
13. Attach the new pitman arm to the original wiper linkage using your original retaining clip (Figure 9). **NOTE: The Selecta-Speed wiper kit is shipped with the pitman arm in the "parked" position.** Do not move the pitman arm by hand to attach the wiper linkage. If the pitman arm is moved from the original "parked" position from Detroit Speed, it may result in the wiper blades stopping in the wrong spot on the windshield.



Figure 9 - Attach Wiper Linkage to Pitman Arm

14. Install the wiper motor connector side of the wiring harness into the wiper motor (Figure 10).



Figure 10 - Wiper Motor Connector

LEAVE THIS PAGE BLANK

15. Loosen the set screw in the wiper knob to remove it from the wiper switch shaft. Remove the wiper nut from the wiper switch by unthreading it from the switch (Figure 11). The wiper switch bezel and switch assembly can now be removed from the dash.

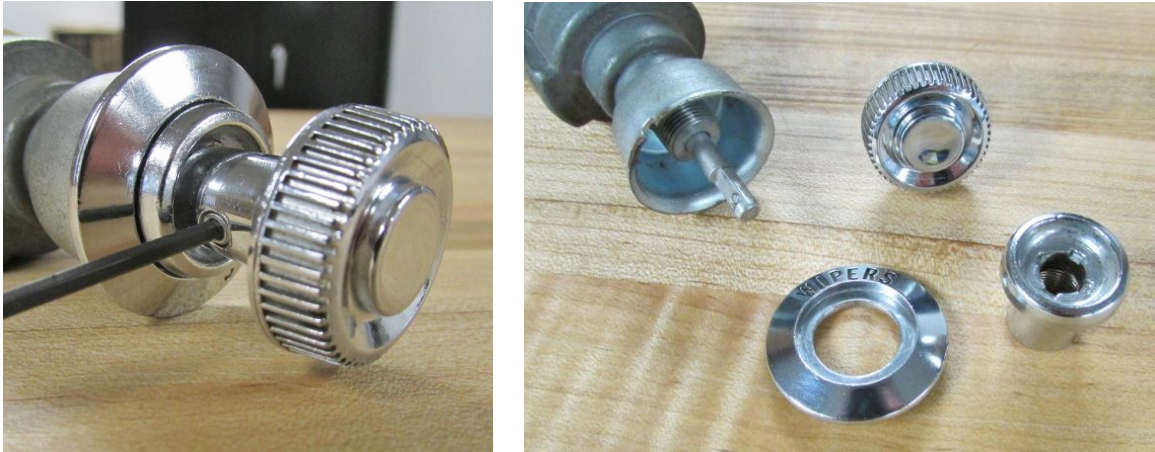


Figure 11 – Remove Wiper Knob and Nut

16. Unplug the factory connector from the back of the wiper switch. The Selecta-Speed switch will replace the stock switch.

17. Remove the thin hex nut and star washer from the DSE wiper switch shaft (Figure 12).



Figure 12 – Remove Nut & Washer

18. Place the DSE wiper switch spacer onto the DSE wiper switch making sure the anti-rotation tab fits in the blind hole on the back of the spacer (Figure 13).

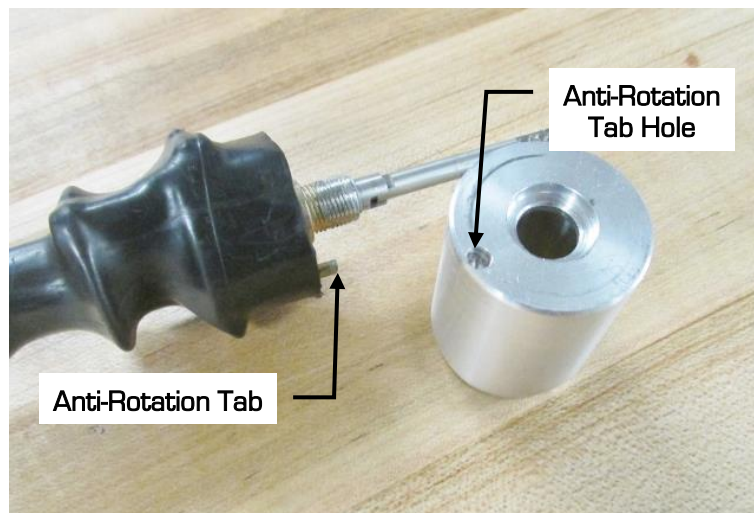


Figure 13 – Place Spacer on Wiper Switch

19. Hold the spacer in place on the wiper switch by re-installing the thin hex nut onto the DSE wiper switch using a 1/2" socket (Figure 14).

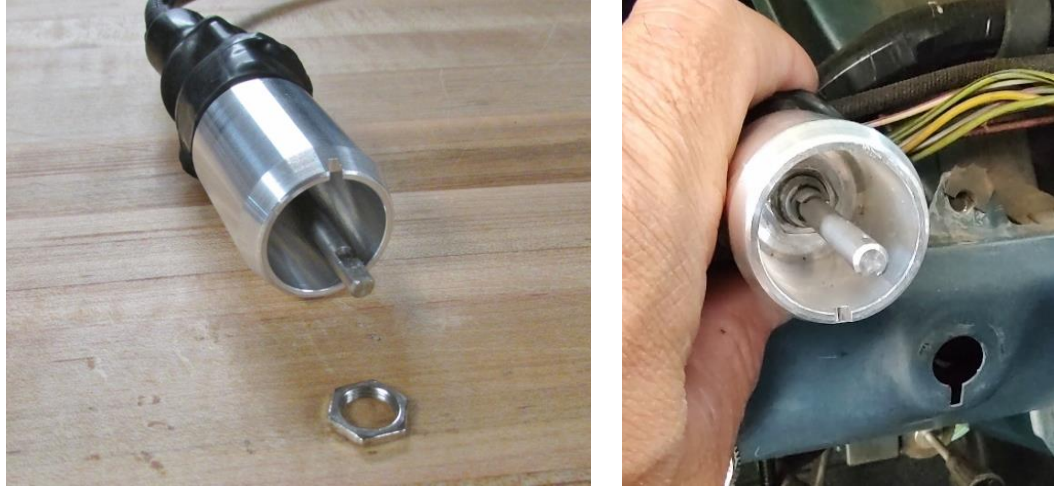


Figure 14 - Install Hex Nut

20. Place the wiper switch and spacer behind the dash and install it through the factory wiper switch hole. Line up the relief in the spacer with the small hole on the dash so the tab on the wiper switch bezel fits into the spacer (Figure 15). **NOTE:** The dash will be between the bezel and the spacer when installed into the vehicle.

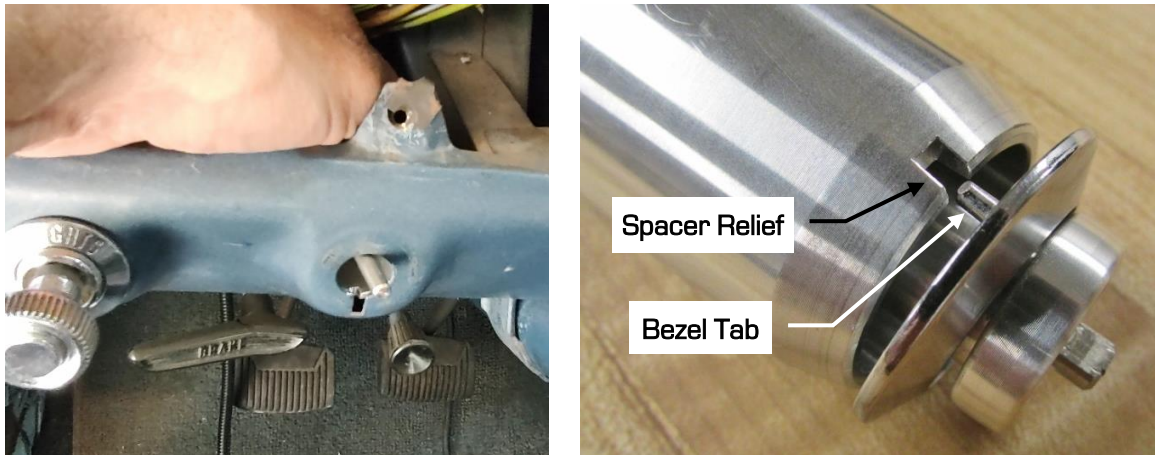


Figure 15 - Locate Wiper Switch Bezel

21. With the wiper switch bezel fit into the hole, thread the new DSE wiper switch nut onto the switch and tighten with a suitable tool to hold the switch in place on the dash (Figure 15).



Figure 15 - Install Wiper Switch Nut

22. Slide the wiper knob onto the switch shaft. Align the set screw with the flat on the shaft and tighten (Figure 16). **NOTE:** Make sure the set screw locks onto the flat on the switch shaft.

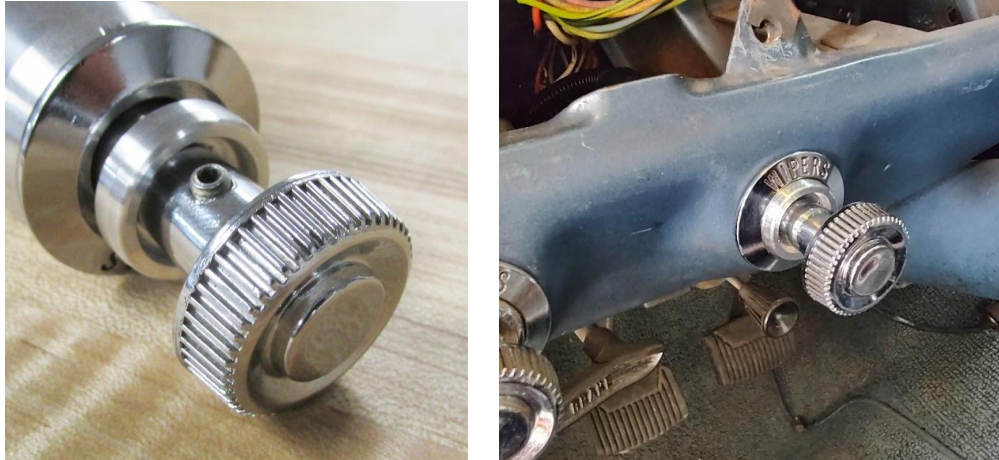


Figure 16 - Install Wiper Knob

23. The Detroit Speed Selecta-Speed harness does include a weather pack connector to install an optional electric inline washer pump into your vehicle (Figure 17). Detroit Speed does offer a washer pump kit you can purchase separately as part number 121102.

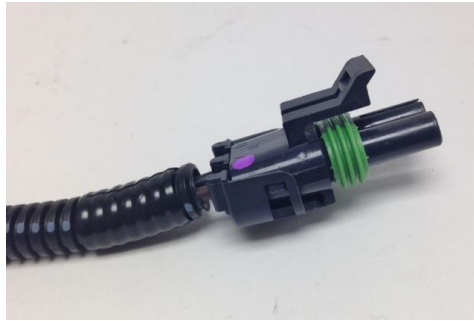


Figure 17 - Washer Pump Connection

24. If you have purchased the Detroit Speed washer pump kit, use the instructions from that kit to complete the washer pump kit installation. If you do not want to use the washer pump feature, you can tie wrap this connector/loom up under the dash.

25. Install the 10-pin connector of the wiring harness into the wiper control module located on the wiper mounting bracket. Install the 4-pin connector from the wiper switch and install it into the control module (Figure 18).

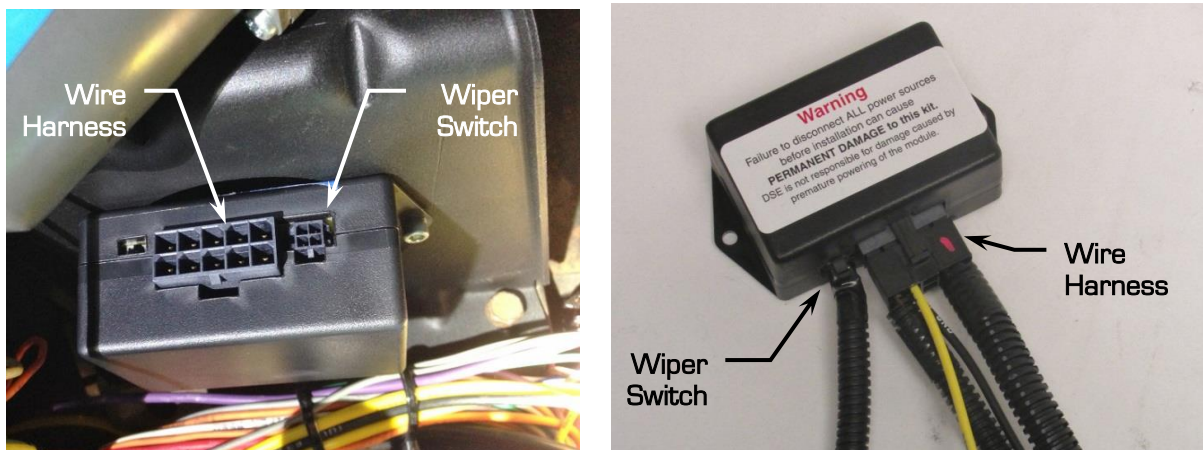


Figure 18 - Connect Wiper Switch & Harness to Module

26. Connect the yellow wire under the dash to a 12V switched source. This lead is supplied with an inline 30 amp ATO fuse.
27. Connect the black wire with the round eyelet under the dash to a ground. Make sure a proper ground is obtained by removing any rust or paint from the metal.
28. Connect the negative battery lead and test the wiper system. Upon a successful test, the wiper conversion is complete.

NOTE: In some cases high energy ignition systems have caused interference with the correct operation of the Selecta-Speed Wiper Kit due to spark plug wires routed closely to the wiper motor. If this occurs, re-routing your spark plug wires may be necessary.

If you have any questions before or during the installation of this product, please contact Detroit Speed at tech@detroitsspeed.com or 704.662.3272